



Code 1097

## Bottom Sampling Dredge

Order Code 1097 | NH [5]

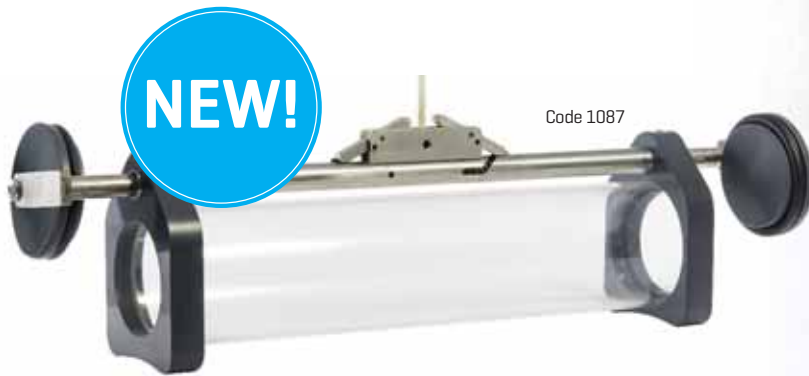
Need a river bottom sample? Collect it easily!

- ▶ stainless steel
- ▶ trigger holds the sampler open while lowering
- ▶ scissor design closes sampler securely
- ▶ 67 cubic inches volume
- ▶ designed for soft bottoms (sand or silt)

## Calibrated line only

Order Code 1064-G | NH [1]

20 meter line with brass clamp and foam float. 1 meter permanent markings in red and 5 meter markings in yellow.



Code 1087

## Horizontal Water Sampler

Grades 5 and up

Order Code 1087 | NH [5]

Collect water samples quickly and easily! This newly designed horizontal water sampler allows water to be sampled at specific depths. A 20 meter calibrated line, marked at one meter intervals, is included. The clear acrylic tube allows a visual inspection of the sample prior to dispensing and holds approximately 1,200 mL of sample.

Send the weighted messenger down the line to trip the closing mechanism at the desired depth. Open one chamber end cap to dispense larger aliquots.



Code 1069-01



## Sampling & Measurement Outfit

Grades 5 and up

Order Code 1069-01 | NH [17]

A necessity for any field sampling effort. Durable, reliable sampling gear and measuring devices are housed within a rugged field carrying case for convenient transport and storage.

### Outfit Includes

Description	Code
Stainless Steel Bottom Sampling Dredge	1097
Plankton Net	1063
Sounding Weight and Calibrated Line	1064-G
Armored Thermometer	1066
Water Sampling Bottle	1054-D0
Forel-Ule Color Comparator	-----
Secchi Disk	0171

