

The Public Pool Monitoring Solution to keep your pool safe and open!

Protect
your aquatic
facility in

60
Seconds!



Certified to
NSF/ANSI Standard 50

Simply Inject Sample
into Reagent Disk



Transfer Data
to Your Mobile
Device



Monitor All
Your Sites

The Challenge

- Getting test results you can trust
- Relying on untrained testers for reliable results
- Preventing pool closures and negative PR
- Avoiding costly law suits & equipment failures
- Seeing real time and recording test results at all your pools & spas

The Solution

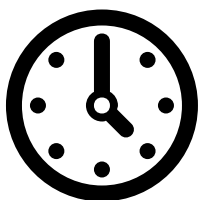
WaterLink® SpinTouch®
with **WaterLink Solutions™**

The innovative **WaterLink® Spin Touch®** photometer handles all your pool and spa testing needs and records data each moment a test is done. Simply fill a multi-test reagent disk with your water sample, insert it in the meter and tap "start." All your vital tests are done automatically, thus eliminating user-error.

Results are displayed on the touch-screen display, saved inside the meter, and easily transferred to software.

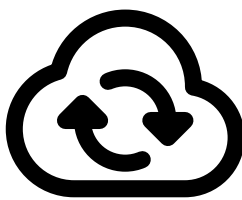


Scan to see video or go to
waterlinkspintouch.com/spin-touch.html



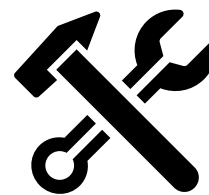
SAVE Time

10 Tests in 60 seconds
Pre-filled Reagent Disk
Just Fill and Spin
No Drops to Count
No Training Needed
No Cleanup



SAVE Data

Save Results in the Device
Save Results to the Cloud
No Longer Write Results
Review Test Data History
Email Reports
Accessible from PC or Mobile Devices



SAVE Problems

Eliminate Errors
Improve Test Reliability
Less Maintenance/Repairs
Improve Bather Safety
Prevent Shutdowns
Avoid Costly Lawsuits

The Device *Precise analysis of 10 parameters in 60 seconds!*



Reliable Results

- Virtually Eliminates User-Error
- Pre-Measured Reagents and Pre-Measured Sample
- Exact Reaction Time and Auto-Blanking
- Meter Calibration Check System
- 6-Wavelength Photometer

Super Fast & Simple

- 30 Seconds for 3-Test Disk, 60 Seconds for 10-Test Disk
- Fill Disk and Insert > Tap "Start Test" > Read Results

Auto-Record Keeping

- Stores Test Dates, Times, Results, Location
- Upload to Cloud, Download to Computer, Print to Bluetooth® Printer [Code 5-0066]

Stand-Alone or Cloud Ready!

- No Computer, Smartphone, or Tablet Needed
- Touchscreen Operation [multi-lingual]
- Communicate through Bluetooth® or USB

New 3-Use Disk Cuts Costs

- 3-Use Disk—Results in 30 Seconds!
- Meter Knows Which Test Section is New Test
- Also Runs 10-Test Disks for Full Test Battery—Results in 60 Seconds! [see various offerings on page 5]

Rugged and Portable

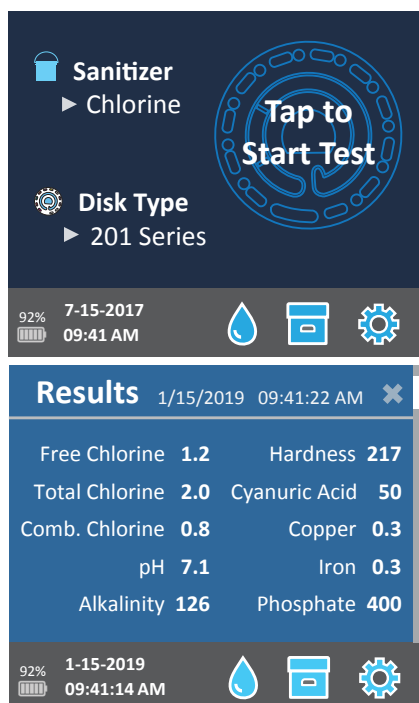
- Innovative Water-Resistant Housing
- Internal, Rechargeable Batteries
- Optional Heavy-Duty, Waterproof Carrying Case

Advanced Cloud Software

- See page 6-7.

Note: The labs listed to the right do not include WaterLink® Spin Disks which are sold separately.

Instrument Type:	Centrifugal Fluidics Photometer
6 Wavelengths:	390 nm, 428 nm, 470 nm, 525 nm, 568 nm, 635 nm
Display:	Color Capacitive Touchscreen, 3.5", 320 X 240 pixel resolution
Languages:	English, French, Spanish, German, Italian, Portuguese, Dutch, Swedish, Turkish, Chinese
Batteries:	Lithium Ion, Rechargeable [Full Charge in 6 hours], 150 tests per charge
Communication:	Bluetooth, USB-C
Calibration:	Factory Set, Field Calibration via Internet Connection
Data Storage:	Last 250 Test Results with Date and Time
Water Resistance:	Rubber Over-molded Base, Rubber USB Port Plug, Gasketed Display and Hinge
Size & Weight:	8.5 L x 4.9 W x 4.1 H inches; 1.74 lb 22.6 L x 12.7 W x 11.4 H cm; 0.79 kg
Operation:	Single On/Off/Reset Button with Indicator Light, Touchscreen
Firmware:	Internet Updateable [New Tests, New Test Calibrations, etc.]
Software [optional]:	Android & iOS Apps, WaterLink Solutions
Printer:	Optional Bluetooth Printer [Code 5-0066]; 384 dots per line at 8 dots/mm resolution
Certification:	CE, Certified to NSF/ANSI Standard 50



The Options



Mobile WaterLink® Spin Touch® Code 3581

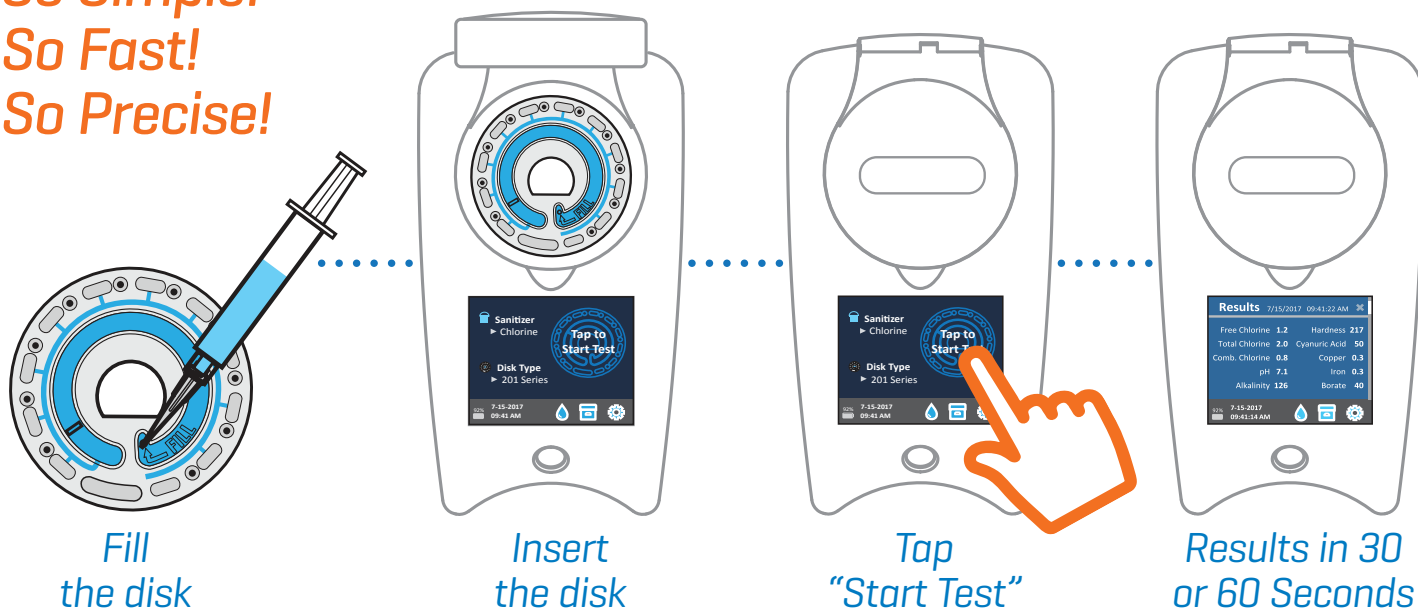
- Photometer
- Instruction Manual & Quick-Start Guide
- 3 Syringes
- Meter Check Disk
- USB Cord with USB Wall Adapter
- Waterproof Carrying Case with Foam Insert [holds meter and accessories]



Mobile Commercial WaterLink® Spin Touch® Code 3582

- Photometer
- Instruction Manual & Quick-Start Guide
- 3 Syringes
- Meter Check Disk
- USB Cord with USB Wall Adapter
- Upright Waterproof Carrying Case with Foam Insert —ideal for 3-Use disk users [holds meter and accessories]

So Simple!
So Fast!
So Precise!



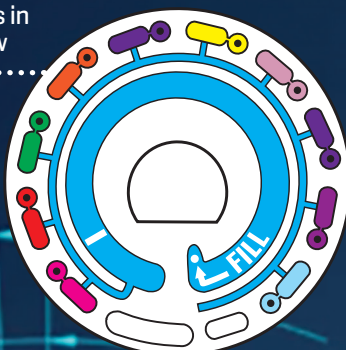
The Reagent Cartridge Disks

10 Test Parameters Disks

Ideal for Service, In-Store, and Public Pool Testing



See Test Parameters in Chart Below

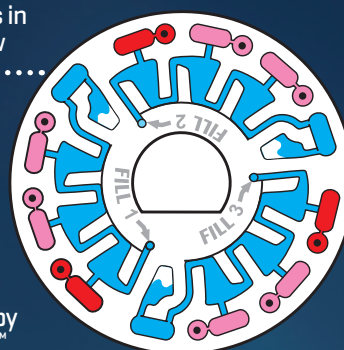


Test 3 Parameters, 3 Times!

Ideal for Public Pools testing throughout the day



See Test Parameters in Chart Below



Combined Chlorine is calculated by Spin Touch™

RECYCLE YOUR DISKS!

Ship us your used disks—we'll grind and recycle them. For details, go to www.waterlinkspintouch.com/support



WaterLink® Spin Disk Series

Order Code	4328-H	4329-H	4330-H	4331-H	4334-H	4335-H
Uses per Disk	Single	Single	Single	Single	3	3
Test Parameter	Range					
Free Chlorine (DPD)	0-15 ppm	■	■	■	■	■
Total Chlorine (DPD)	0-15 ppm	■	■	■	■	
Bromine (DPD)	0-33 ppm	■	■	■	■	■
pH	6.4-8.6	■	■	■	■	■
Calcium Hardness	0-800 ppm	■	■	■	■	
Total Alkalinity	0-250 ppm	■	■	■	■	■
Cyanuric Acid	5-150 ppm	■	■	■		
Copper	0-3.0 ppm	■	■	■	■	
Iron	0-3.0 ppm	■	■	■	■	
Salt	0-5000 ppm	■	■	■		
Phosphate	0-2000 ppb		■			
Borate	0-80 ppm			■	■	
Biguanide	0-70 ppm			■	■	
Biguanide Shock	0-250 ppm			■	■	

Disk Patent No. 8,734,734 | FCI Patent No. 8,987,000 | TCI Patent No. 8,993,337 | FCI EU Patent No. EP2784503 A1



Certified to NSF/ANSI Standard 50

NSF CERTIFICATION

The NSF/ANSI 50 certification mark on a water quality testing device (WQTD) used in recreational waters, such as pools and spas, means that the product was reviewed and certified by NSF International to meet applicable American National Standards for product design and performance. NSF tests and re-tests products to confirm that they comply with all requirements of certification for performance, accuracy and operating range. Certification levels of L1, L2, and L3 are possible with L1 being the highest rating.

Test Factor	Application	NSF Certified Range	NSF Level
			Accuracy/Overall
pH	Pool	6.4-8.6	L1
	Spa/Hot Tub	6.4-8.6	L1
Free Chlorine	Pool	0-15 ppm	L1
	Spa/Hot Tub	0-7 ppm	L1
Chlorine, Combined	Pool	0-1 ppm	L1
	Spa/Hot Tub	0-1 ppm	L1
Cyanuric Acid	Pool	5-50 ppm	L1

Other test factors not evaluated by NSF. Go to www.nsf.org for a current listing of LaMotte NSF certified products.

The Software



*Takes world's best testing system to the next level!
...and is designed for public pool operators.*

- **Capture instantly date, time, test results** for every pool, spa, fountain, etc. for which you are responsible.
- **View in real time** from any internet connected device every property's body of water for which you are responsible.
- **Monitoring Dashboard alerts you** to all water bodies out of range in real time. Stores and graphically presents **complete water quality history** over any time period for all bodies of water.
- **Powerful, Customizable Treatment Engine** instantly provides dosing instructions and advice.

All Free of Charge [except Monitoring Dashboard at nominal monthly charge].

Monitoring Dashboard

Watch all your bodies of water in real-time and see color alerted out-of-range problems instantly on a consolidate dashboard.

- Review test results at a glance, shaping charts and graphs to show information relevant to you.
- Define when a test factor result should indicate it is out of range or on target.
- Test Results entered manually are flagged with a special icon.
- Graphically trend test data to easily pick out problem areas.

Test History Avoid costly pool shut downs and law suits by showing complete history of NSF approved SpinTouch test results by day for any period.

Most Recently Tested Sites											
Date/Time	Site Name	Tested By	FCL	TCL	PH	ALK	HRD	SLT	PHO	FE	
01/15/2019 2:10 pm	Town Pool	Jack Banks	2.24	2.24	7.6	64	204	1325	0	0	▲
01/15/2019 2:08 pm	Hotel One Pool	Susan Wright	2.24	6	7.6	78	204	1425	0	0	
01/10/2019 11:28 am	Hotel One Spa	Susan Wright	0	2	7.7	85	204	1525	0	0	
01/08/2019 2:45 PM	Club 6 Pool	David Shores	1.06	1.06	7.8	86	204	1600	0	0	
01/08/2019 2:34 pm	Club 6 Spa	David Shores	1.12	1.12	7.8	85	204	1670	0	0	
01/08/2019 12:22 pm	Hotel One Ftn	Sam Jones	1.12	1.12	7.8	87	204	1670	0	0	

Basic Pool Profile ▼ | 1 2 3 4 5 ... | Out of Range: ■ In Range: ■ On Target: ■ 1-6 of 137 items

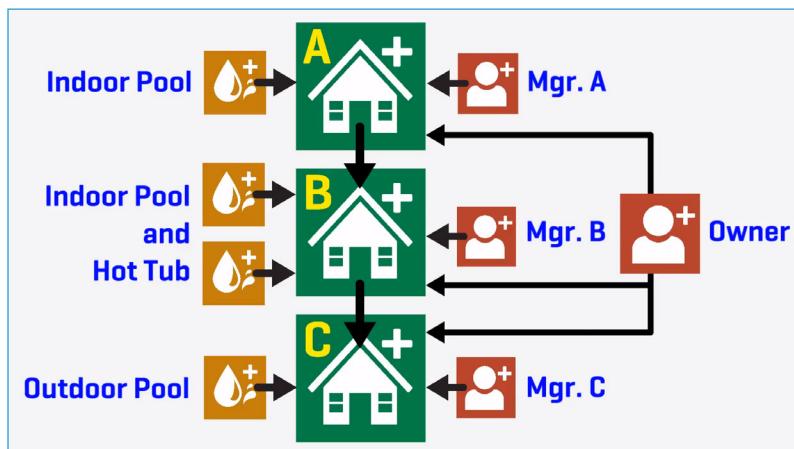
Flexible Data Management

Set up any relationships of Sites to Properties to Contacts to fit your monitoring needs. Data is divided among three simple entities—Sites, Properties, and Contacts:

- **Sites** are bodies of water you can test.
- **Properties** are physical locations where a Site exists.
- **Contacts** are individuals you'd like to contact when a water test is complete.

If all you need are Sites, don't worry about the rest, but if you need, set up complex relationships between these entities.

- Manage records across three entities: Properties, Contacts, and Sites.
- Flexible linking of entities builds relationship between your data.
- Intelligent search controls help you find exactly what you are looking for.



Accessible from PC or Mobile Devices

WaterLink Solutions is a web-based application, accessible from any internet connected device. From a desktop computer or laptop, WaterLink Solutions can be accessed via your web browser, or download the WaterLink Solutions mobile app for Android® or iOS® devices.



Integrated with the WaterLink® SpinTouch®

For Android and iOS devices running the WaterLink Solutions Mobile app, the WaterLink Spin Touch transfers results quickly and easily over Bluetooth®.

- Free to use... Register now for Free!
- Optional add-ons expand the program's functionality

Free to Use

To learn more and sign up for a free account, visit www.softwarecenter.lamotte.com. There are several completely optional add-ons available for purchase to enhance your WaterLink Solutions experience, but LaMotte is proud to always offer the core of WaterLink Solutions for free.

Visit www.softwarecenter.lamotte.com to sign up for your FREE WaterLink Solutions account!

Additional and completely optional Addons are available for purchase to enhance your WaterLink Solutions experience.

Is WaterLink® Solutions™ for you?

If you are responsible for any aquatic feature, ABSOLUTELY!

WaterLink® Solutions is designed for:

- Public Pool Operators
- Health Inspectors
- Water Parks
- Hotels and Resorts

With WaterLink® Solutions™ and the WaterLink® Spin Touch®, you have a complete solution to test, monitor, and analyze your data from anywhere at any time.



Certified to
NSF/ANSI Standard 50

WaterLink **SpinTouch** *The Future of Water Testing*

LaMotte Water Testing Leader Since 1919!

LaMotte Company · PO Box 329 · Chestertown · Maryland · 21620 · USA
800-344-3100 or 410-778-3100 · waterlinkspintouch.com



©2019 LaMotte Company · LaMotte WaterLink Spin Touch Public Pools.indd · 1.28.19

Android logo, Google™, and Google Chrome™ are trademarks of Google Inc. iPad and iPhone are trademarks of Apple Inc., registered in the U.S. and other countries. Bluetooth® is a registered trademark of Bluetooth® SIG, Inc. Internet Explorer® and Microsoft .NET® are registered trademarks of the Microsoft® group of companies. Windows®, Windows® 10, Windows® 8, Windows® 7, Internet Explorer®, and Microsoft .NET® are registered trademarks of the Microsoft® group of companies. Pentium® is a registered trademark of the Intel® corporation in the U.S. and other countries.